

4X4 CONFIGURATION

OVER SURFACE SPACING
(CREEP DISTANCE) = 4.50 "

BRASS INSERTS AND OTHER INSERT
SIZES AND COMBINATIONS ARE
AVAILABLE UPON SPECIAL REQUEST

AVAILABLE THREADS

UNC THREAD STYLES

PART NUMBER	BOTTOM INSERT SIZE	TOP INSERT SIZE	MATERIAL
6350-S10 4X2	3/8-16 X 5/8	3/8-16 X 5/8	STEEL
6350-S10 4X4	3/8-16 X 5/8	3/8-16 X 5/8	STEEL
6350-S6/S10 4X1	1/2-13 X 5/8	3/8-16 X 5/8	STEEL
6350-S8/S10 4X1	5/8-11 X 3/4	3/8-16 X 5/8	STEEL
6350-S6/S10 2X1	1/2-13 X 5/8	3/8-16 X 5/8	STEEL
6350-S10	3/8-16 X 5/8	3/8-16 X 5/8	STEEL
6350-S81/M10-S10/M10	M10X1.5X1	M10X1.5X5/8	STEEL
6350-S6/S10 4X4X1	1/2-13 X 5/8	3/8-16 X 5/8	STEEL

CONFIDENTIAL This print and the specifications are the property of Mar-Bal Inc. and has been issued with the understanding that it will not be reproduced, revealed to or used for manufacture for others, and will be returned upon request.

DATE: 7-AUG-2008

MAR-BAL, Incorporated
5400 Reserve Way
Dublin, VA 24084
www.mar-bal.com

TITLE

6000 SERIES INSULATORS

PART NUMBER:

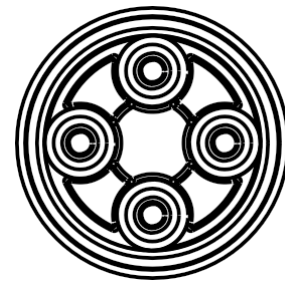
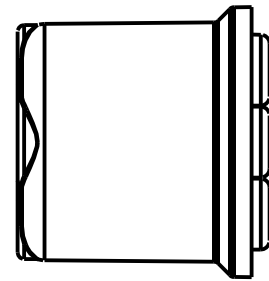
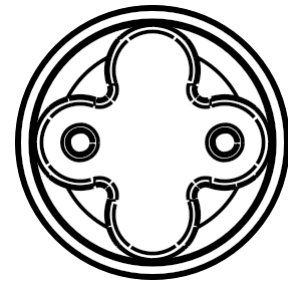
6350-XX

SUGGESTED INDOOR RATING:

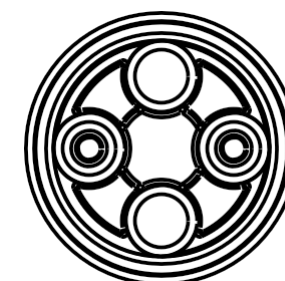
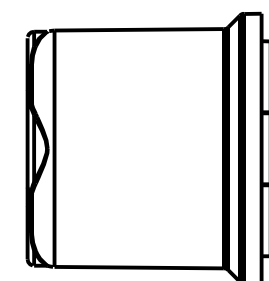
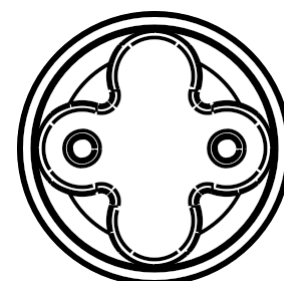
5.0 kV

SHEET 1 OF 2

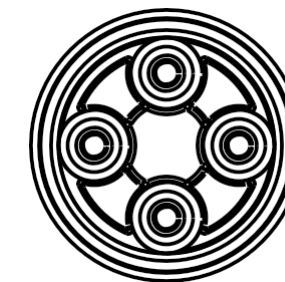
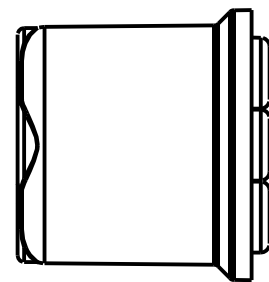
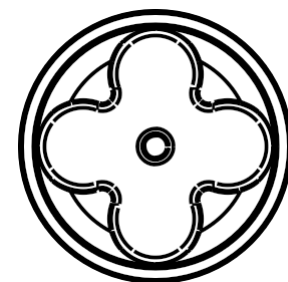
SCALE 1.000



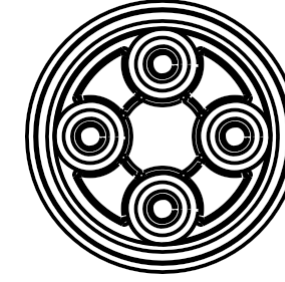
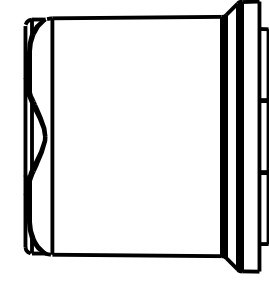
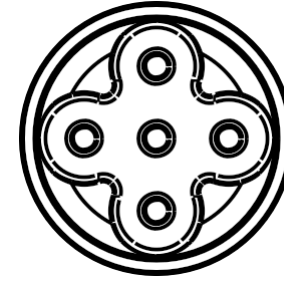
4X2 CONFIGURATION



2X2 CONFIGURATION



4X1 CONFIGURATION



4X4X1 CONFIGURATION

CONFIDENTIAL This print and the specifications are the property of Mar-Bal Inc. and has been issued with the understanding that it will not be reproduced, revealed to or used for manufacture for others, and will be returned upon request.

DATE: 7-AUG-2008

MAR-BAL, Incorporated
5400 Reserve Way
Dublin, VA 24084
www.mar-bal.com

TITLE

6000 SERIES INSULATORS

PART NUMBER:

6350-XX

SUGGESTED INDOOR RATING:

5.0 kV

SHEET 2 OF 2

SCALE 0.375