

4X4 CONFIGURATION

OVER SURFACE SPACING
(CREEP DISTANCE) = 4.50 "

Physical and Electrical Properties	
Tensile Strength (lbs)	>10000
Cantilever Strength (lbs)	>4000
Compression Strength (lbs)	>50000
Thread Stripping Torque (ft. lbs)	30
Arc Resistance (sec. ASTM D495)	180+
Water Absorption (% in 24 hrs @ 23 deg C)	0.15
Creep Distance (in.)	4.50
Max Temperature	130 deg C
UL subject 94 Flame Resistance	94 V-0
UL Listed E84767	

BRASS INSERTS AND OTHER INSERT SIZES AND COMBINATIONS ARE AVAILABLE UPON SPECIAL REQUEST

AVAILABLE THREADS

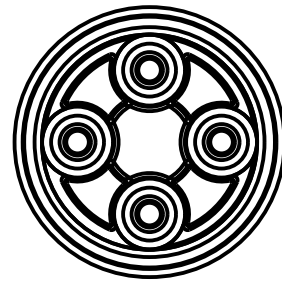
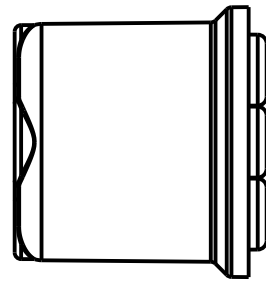
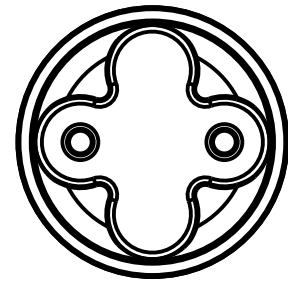
UNC THREAD STYLES

PART NUMBER	TOP INSERT SIZE	BOTTOM INSERT SIZE	MATERIAL
6350-S10 4X2	3/8-16 X 5/8	3/8-16 X 5/8	STEEL
6350-S10 4X4	3/8-16 X 5/8	3/8-16 X 5/8	STEEL
6350-S6/S10 4X1	1/2-13 X 5/8	3/8-16 X 5/8	STEEL
6350-S8/S10 4X1	5/8-11 X 3/4	3/8-16 X 5/8	STEEL
6350-S6/S10 2X1	1/2-13 X 5/8	3/8-16 X 5/8	STEEL
6350-S10	3/8-16 X 5/8	3/8-16 X 5/8	STEEL
6350-S81/M10-S10/M10	M10X1.5X1	M10X1.5X5/8	STEEL
6350-S6/S10 4X4X1	1/2-13 X 5/8	3/8-16 X 5/8	STEEL

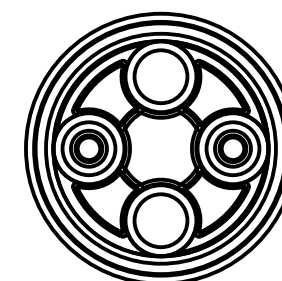
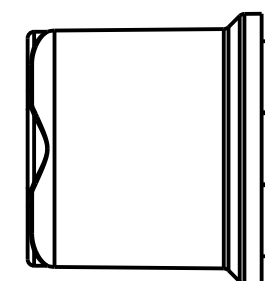
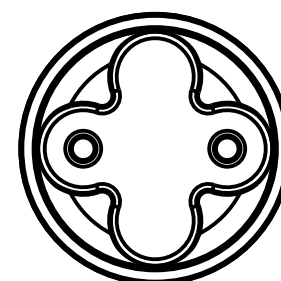
CONFIDENTIAL
This print and the specifications are the property of Mar-Bal Inc. and has been issued with the understanding that it will not be reproduced, revealed to or used for manufacture for others, and will be returned upon request.

DATE: 7-AUG-2008

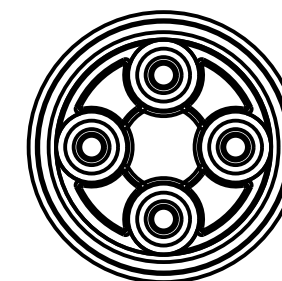
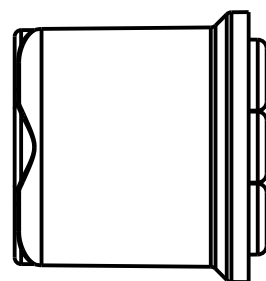
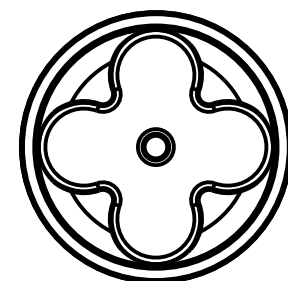
MAR-BAL, Incorporated 5400 Reserve Way Dublin, VA 24084 www.mar-bal.com	
TITLE 6000 SERIES INSULATORS	
PART NUMBER:	SUGGESTED INDOOR RATING:
6350-XX	5.0 kV
DATE: 7-AUG-2008	SHEET 1 OF 2
	SCALE 1.000



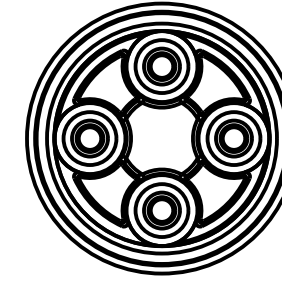
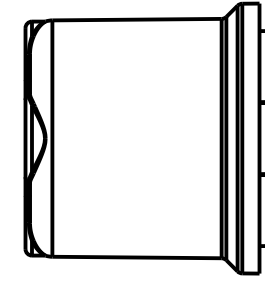
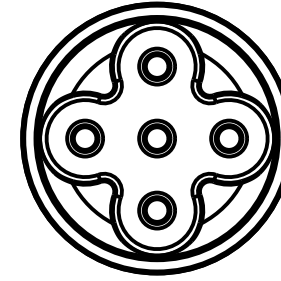
4X2 CONFIGURATION



2X2 CONFIGURATION



4X1 CONFIGURATION



4X4X1 CONFIGURATION

CONFIDENTIAL
This print and the specifications are the property of Mar-Bal Inc. and has been issued with the understanding that it will not be reproduced, revealed to or used for manufacture for others, and will be returned upon request.

DATE: 7-AUG-2008

		MAR-BAL, Incorporated 5400 Reserve Way Dublin, VA 24084 www.mar-bal.com	
TITLE 6000 SERIES INSULATORS			
PART NUMBER: 6350-XX		SUGGESTED INDOOR RATING: 5.0 kV	
DATE: 7-AUG-2008		SCALE 0.375	